



Co-funded by  
the European Union



**INCLUDATE**  
Educating for Inclusion



# URBAN NATURE IN COPENHAGEN: UNTAPPED POTENTIAL FOR THE INCLUSION OF MIGRANTS AND MINORITIES

Crossing Borders Copenhagen





## TABLE OF CONTENTS

INTRODUCTION	03
CHAPTER 01: NEEDS ANALYSIS	08
CHAPTER 02: STRATEGY	16
CHAPTER 03: IMPLEMENTATION	31
CHAPTER 04: CONCLUSION	36

---

## INTRODUCTION

---

## INTRODUCTION

Copenhagen is not just a city but a dynamic socio-ecological system where the environment and human society are intricately interconnected. In order to achieve comprehensive inclusion of migrants in Copenhagen, it is essential to recognize and address the environmental aspects of the city and utilise its immense potential, making it a home and not just a place to live. Copenhagen's unique position as a global leader in sustainability and green initiatives makes it an ideal platform for integrating environmental considerations into social inclusion efforts. By acknowledging the interdependence of social and ecological systems, the city can foster a more holistic approach to inclusion that benefits all its residents. Therefore, this local inclusion plan will present a strategy to utilize Copenhagen's Urban Nature as a mediator for the inclusion of migrants and members of minorities.

### Immigrants in Copenhagen

Copenhagen is the capital city of Denmark, and out of the country's 5.8 million inhabitants, roughly 1.39 million people call Copenhagen home. Of Denmark's total population in 2024, 15.9 % are made up of immigrants and their descendants. This number includes people from a variety of different backgrounds, which will serve as the main topic that context will be provided to in the following local inclusion plan. Of the 1.39 million people living in Copenhagen, data from the population register of 2019 shows that 305,588 people living in Copenhagen are of migrant background. This makes up 22.9% of the total population of Copenhagen. The largest immigrant origin groups in Copenhagen are the following, Turkey (31,340), Pakistan (21,646), Iraq (13,619), Poland (12,469), and Germany (9558). This has changed considerably in the past 40 years. In 1980 the top immigrant origin groups were Sweden, Germany, Pakistan, Norway, Turkey, and Yugoslavia. The changes in the composition of the Copenhagen migrant population stem from varying geopolitical questions, new migration pathways from conflict regions and network migration from Eastern Europeans who were able to access the Danish labour market due to newly admitted countries to the European Union. Through Community Mapping we were able to survey a number of migrants who live in Copenhagen. We learned about their lives in the city through the places that they like, dislike, and are most familiar with. The age group stemmed from the ages of 21-65. The following nationalities were represented in our event: Turkish, Polish, Ukrainian, Jamaican, English, German, Greek, Mauritanian, Ugandan, and Italian. None of the group was born in Copenhagen, most of them having moved to the city in the past 10 years, but there were a few who had been living in the city for most of their lives. There were no specific considerations regarding national origin, as the main wish of the event was for it to be open to all with a migrant background in Copenhagen. However, we did make a concerted effort to include two members of the Ukrainian migrant community to reflect the increase of newcomers from this country as a result of the on-going war.

## Urban Nature in Copenhagen

To understand the role of Urban Nature and its impact on and potential for migrants and members of minorities in Copenhagen, it is crucial to understand what this city offers to its inhabitants. Copenhagen's urban nature provides a valuable resource for the inclusion and well-being of migrant communities and minorities. The city is renowned for its green spaces, including parks, gardens, and waterfront areas, which offer opportunities for social interaction, recreational activities, and cultural events. These urban nature areas can serve as inclusive gathering spaces where diverse communities can come together, share experiences, and foster a sense of belonging. In Copenhagen, 80% of Copenhageners live within a mere 300 meters of a green area, showcasing the city's commitment to accessible green spaces. As of 2018, there were approximately 31.9 square meters of green area per inhabitant and with a staggering 2060 hectares of green areas accessible to the public, including 200 hectares of lakes and aquatic spaces, Copenhagen boasts an impressive network of natural environments. Additionally, the city boasts an extensive 92 kilometers of coastline, further enriching its urban nature offerings.

Another testament to the focus on creating and preserving green areas can be seen in the urban planning of Copenhagen and its famous Five Finger Plan.

The "Five Finger Plan" is a strategic urban development plan for Copenhagen. It was introduced in the 1940s and has since guided the city's growth and development. The plan involves dividing the city into five "fingers" or zones, each radiating outwards from the city center, with the aim of decentralizing services and amenities while preserving green spaces and promoting sustainable development. The plan emphasizes the importance of integrating urban nature into the city's design to create a more livable and environmentally friendly urban environment. Copenhagen's Five Finger urban plan is a post-war urbanization strategy that has successfully guided the city's development for over seven decades. This strategic framework aims to prevent urban sprawl while ensuring high-quality urban living. By dividing the city into five distinct zones radiating from the center, the plan emphasizes the integration of green spaces and the preservation of natural environments. This approach has been instrumental in maintaining Copenhagen's reputation as a livable city with a high quality of life. Over the years, the Five Finger plan has proven successful in balancing urban development with the preservation of urban nature, contributing to Copenhagen's sustainable growth and prosperity.

Recent political efforts and agreements show the consensus about the importance of green spaces for the city's landscape and its future sustainable development. Copenhagen is aspiring to become the world's first carbon-neutral capital by 2025, and has implemented several distinct governmental decisions and tools to preserve and enhance its urban nature from 2015 to 2025.

One of these tools is the Green Planning Tool, a strategic framework designed to safeguard the city's natural landscapes while promoting sustainable development. This tool guides urban planning decisions to prevent overdevelopment and ensure the preservation of green spaces, parks, and waterfronts within Copenhagen's city limits.

Another key governmental decision is the Tree Policy, which outlines measures to increase the number of trees and greenery across the city. By prioritizing tree-planting initiatives and green infrastructure projects, whilst limiting the cutdown of already existing trees, Copenhagen aims to enhance biodiversity, improve air quality, and mitigate the urban heat island effect.

New Emerging funding opportunities by the Copenhagen communes for nature and environment-focused projects in neighbourhoods highlight the willingness of the city government to support and give agency to the inhabitants. These efforts underscore Copenhagen's commitment to sustainable urban development and environmental conservation, positioning the city as a global leader in green innovation and urban planning.

In the endeavor to combat climate change, cities like Copenhagen must adopt Nature-Based Solutions (NbS) and embrace new green technologies, integrating natural processes like ecosystem restoration and green infrastructure into decision-making. Nature-based solutions are innovative approaches that harness the inherent power of nature to address societal challenges in a sustainable manner. These solutions integrate natural processes, such as ecosystem restoration, green infrastructure, and biodiversity conservation, into planning and decision-making processes. For example, in flood-prone urban areas like Copenhagen, restoring wetlands can mitigate flooding risks by absorbing excess rainfall and reducing the severity of floods. Wetlands act as natural sponges, slowing down and retaining water, while also providing habitat for diverse species and enhancing water quality. NbS offer adaptable, cost-effective solutions that promote environmental, social, and economic well-being. Educating about NbS and new technologies is crucial for generating interest and awareness, and bridging the gap between urban nature and social inclusion. By providing opportunities for inhabitants to contribute, learn about new technologies, and engage in maintenance, cities can foster a deeper understanding and appreciation for NbS, empowering individuals and opening doors to new job opportunities. Encouraging community involvement strengthens urban ecosystems, and builds communal wealth, laying the foundation for a sustainable, resilient and inclusive future.

#### Nature Based Initiatives

In this Local Inclusion Plan we speak of Nature-based initiatives. They encompass a diverse array of activities and projects that occur within natural environments, where

nature plays a central role in the endeavour. More simply, they could be described as “outdoor activities”. These initiatives range from recreational pursuits to activist efforts and include activities such as yoga and mindfulness groups in parks, swimming clubs, community gardens and urban farms, ecosystem restoration projects, running clubs, biological research groups, bird-watching communities, nature photography classes, and many more initiatives. Whether aimed at promoting physical well-being, fostering community engagement, or conserving natural resources, nature-based initiatives recognize and harness the inherent benefits of interacting with the natural world. They contribute to individual and collective health, social cohesion, and environmental stewardship, enhancing the overall quality of life for participants and communities alike.

### The three pillars of this Local Inclusion Plan

To conclude the introduction, it is important to present the three pillars on which our local inclusion Plan “Urban Nature in Copenhagen: Untapped Potential for the Inclusion of Migrants” is built.

**Meaning:** Copenhagen's urban nature holds profound significance for migrants, offering numerous benefits like mental health improvement, social interaction opportunities, safety, and belonging. It serves as a space for recreation, fosters integration, and is easily accessible at a low cost. "Copenhagen is safe, green, and beautiful," encapsulates its allure. But this perception is shared by non-Danes as well as Danes and therefore creates a common ground for integration and inclusion.

**Potential:** Urban nature in Copenhagen presents an untapped resource for migrant integration. Beyond its already existing benefits, it has the potential to serve as a tool for symbiotic relationships. Migrants can contribute positively to and care for green spaces, fostering mutual benefits for both parties. Furthermore, by focusing in our strategy on how we can make already existing nature-based initiatives in CPH more inclusive we can “use what we already have” and honour the amazing social and environmental work that is already ongoing in greater Copenhagen led by its citizens. By creating new nature-based initiatives that focus specifically on the inclusion of newcomers and members of minorities in Copenhagen we plan to foster innovative collaborations and inclusive practices. Through defining and working in the intersections of urban nature and inclusion this plan can create and promote sustainable development, environmental stewardship and intercultural learning.

**Importance:** Our decision to focus on urban nature in Copenhagen stems from its dual role in fostering inclusion and sustainable development. Our plan acknowledges the importance of sustainable practices, climate action and just green transitions and offers practical approaches to inclusion. By intertwining these topics, we aim to resonate with local communities, policymakers, stakeholders, and municipalities. This approach seeks to generate attention and, spark dialogue and collaboration. This strategy is important because it aligns with Copenhagen's broader goals for development and sustainability harnessing the unused potential of this beautiful city.

0

0



## INTRODUCTION TO CHAPTER 01

*In this section, we delve into the multifaceted needs of newcomers and members of minorities in Copenhagen, recognizing the intricate and varied experiences of each individual within these communities. Although there exists limited scientific research on the specific needs of migrants and minority members in Copenhagen, insights gleaned from the INCLUDATE project offer valuable perspectives that underscore the imperative for enhanced social inclusion.*

## 1NEWCOMERS IN COPENHAGEN

Newcomers in Copenhagen, particularly migrants, encounter a myriad of challenges as they navigate the complexities of integration into Danish society.

1. **Language Barrier:** A significant proportion of newcomers arrive in Copenhagen with minimal proficiency in the Danish language, presenting formidable obstacles in their daily interactions, access to essential services, and employment prospects. Many grapple with the decision to prioritize language learning amidst the uncertainties of their stay in Copenhagen.

2. **Expat Bubble:** Some newcomers find themselves ensconced within the "expat bubble," where interactions predominantly occur within expatriate circles, limiting exposure to broader Danish society. Research suggests that forming meaningful connections with native Danes requires concerted effort, often resulting in insular social networks among newcomers.

3. **Unfamiliarity with Danish System & Bureaucracy:** The intricate Danish system and bureaucratic processes pose formidable challenges for newcomers, ranging from navigating residency permits to understanding tax obligations. Despite digitalization and English-language resources, acclimating to Danish systems remains daunting for many newcomers.

4. **Integration Process:** Newcomers are confronted with the multifaceted task of integrating into Danish society, encompassing securing housing, employment, forging social networks, and assimilating cultural norms.

5. **Financial Strain:** The integration process is accompanied by substantial financial burdens, including exorbitant housing costs, steep deposits, and moving expenses. Recreational pursuits often prove costly, exacerbating financial stress among newcomers, particularly those with limited economic resources.

6. **Housing Issues:** Due to soaring housing prices, many newcomers are compelled to reside in the outskirts of Copenhagen, where rents are relatively affordable. However, this spatial segregation may engender a sense of detachment from the vibrant urban core, impacting social cohesion and integration efforts.

7. **Mental Health Stressors:** Newcomers contend with a spectrum of mental health stressors, including feelings of loneliness, homesickness, and the challenges of cultural adjustment. The experience of isolation and displacement in a foreign land can significantly undermine their psychological well-being.



## 2 MEMBERS OF MINORITIES IN COPENHAGEN

Second-generation migrants and non-EU minorities in Copenhagen exhibit a nuanced profile shaped by their unique experiences and circumstances within Danish society.

1. Linguistic Proficiency: Unlike newcomers, members of minorities typically possess a proficient command of the Danish language, having been raised or spent significant periods in Denmark. This linguistic acumen facilitates their integration and communication within Danish society.

2. Familiarity with Danish System & Bureaucracy: Members of minorities exhibit a degree of familiarity with the Danish system and bureaucratic processes, albeit often marred by firsthand encounters with discrimination and bias.

3. Systemic Challenges: Despite their familiarity with Danish society, members of minorities continue to grapple with systemic challenges, including discrimination, racism, poverty, and segregation, which impede their access to opportunities and perpetuate social inequalities.

4. Economic Disparities: Employment discrimination remains a formidable barrier for members of minorities, resulting in lower income levels and restricted economic mobility compared to their Danish counterparts.

5. Residential Patterns: Members of minorities often reside in the outskirts of Copenhagen and social housing complexes, characterized by lower socioeconomic status and limited access to resources, exacerbating social marginalization and spatial segregation.

6. Mental Health Stressors: Members of minorities confront various mental health stressors, including feelings of powerlessness and helplessness in the face of systemic injustices and societal barriers, underscoring the need for targeted mental health interventions and support mechanisms.

In comparing these two profiles, it is evident that both newcomers and members of minorities face multifaceted challenges and structural barriers in their quest for social inclusion and integration in Denmark.

## 3 THE MEANING OF NATURE



In our research, a prevalent theme emerged from every interview: the transformative power of nature. Copenhagen's natural landscapes are universally lauded by migrants and members of minorities for their restorative and uplifting qualities. The following quotes encapsulate their sentiments:

*“My hometown is not like this, we don’t have parks and beaches that are so beautiful and clean, everything is busy and dirty, here there is nature and it feels calm and serene”*

*“I wasn’t aware of how much I could be impacted by nature until I moved here, and then I experienced the fresh air, the trees, and how nice they are to walk in, and I realized how happy I could be here”*

*“Things are very expensive here, very expensive, and that means I don’t always have the money for activities, but when the nature is around me there is always something to do”*

From the e-book [“Analysing Inclusive Communities-The lived experiences of diverse migrant groups in five European cities & opportunities for positive change”](#)

In the next section, we will take a look at the needs that can be extracted from the profiles presented before and the beneficial qualities of Urban nature.



## 4 NEEDS ANALYSIS

### Need for More integration in local Danish culture and active city spaces

Migrants and members of minorities residing in the outskirts of Copenhagen often feel disconnected from the vibrant cultural fabric of the city. There is a pressing need for greater integration in local Danish culture and active city spaces to foster a sense of belonging and community cohesion. By making these areas more inclusive and culturally diverse, creating awareness about the activities taking place residents can experience the richness and vibrancy of their neighbourhoods. Initiatives aimed at promoting cultural exchange, facilitating language learning, and encouraging interaction with Danish residents are essential for bridging social divides and creating dynamic, inclusive urban environments where everyone feels valued and included.

### Need for More spaces that foster diversity, Dialogue and safe multicultural encounters

The need for more spaces that foster diversity, dialogue, and safe multicultural encounters arises from the tendency of migrants to remain within their social bubbles, limiting their interaction with the broader community. Encouraging multicultural encounters in safe environments promotes social integration, mutual understanding, and cultural exchange. By creating spaces where migrants feel welcome and included, they are more likely to venture outside their comfort zones, engage with different cultures, and build meaningful connections with local residents. These spaces serve as catalysts for breaking down barriers, fostering empathy, and promoting a sense of unity and belonging among diverse communities within Copenhagen.

### Need for more accessibility, agency and interactivity of Copenhagen's green areas

The need for more accessibility, agency, and interactivity with Copenhagen's green areas is underscored by the positive impact of nature on the living experiences of internationals. Affordable access to green spaces is essential for improving mental well-being, reducing stress, and fostering a sense of belonging among internationals. By prioritizing affordability and inclusivity, initiatives can ensure that all residents have equitable access to nature-rich environments and activities. Moreover, empowering migrants and members of minorities to participate in nature-based initiatives and decision-making processes regarding green spaces enhances their sense of agency and ownership. This not only enriches their living experiences but also strengthens community cohesion and environmental stewardship within Copenhagen. Oftentimes Urban Nature's design and maintenance are in control of the municipalities and residents only get to consume or experience these places. There is a need to transition from these passive behaviours to active stewardship.

## Need for More affordable, sustainable housing that feels like home

There is a pressing need for more affordable, sustainable housing that provides a sense of belonging for migrants and minority members. Access to such housing ensures not only affordability but also a feeling of home, essential for integration and well-being. Most often the more affordable places to live for migrants and members of minorities are in the outskirts of Copenhagen, or in "Vulnerable residential area" (Danish: Udsat boligområde) that are less attractive and perceived as less beautiful and more segregated. By incorporating and creating awareness about nature-based initiatives, even in rural and less favoured neighbourhoods, these areas can transform into vibrant, inviting communities. Water, Green spaces and parks not only enhance aesthetics but also promote mental and physical well-being, fostering a sense of pride and community ownership, but they are not a must, even communities without these assets can and should turn unused spaces like vacant lots, roofs, yards, streets into places where nature-based initiatives can take place and biodiversity can thrive. Affordable, sustainable housing embedded in nature-centric environments is crucial for nurturing inclusivity, cohesion, and a sense of belonging among diverse populations.

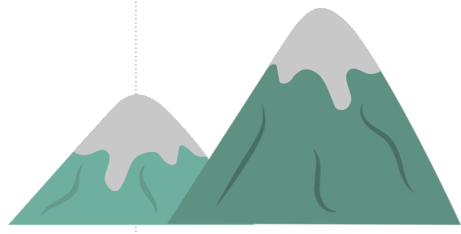
## The importance of "Placemaking"

"Placemaking" involves the collaborative process of transforming public spaces into vibrant, inclusive environments that reflect the needs and identities of the community. It empowers individuals, including migrants, to actively participate in shaping their surroundings, fostering a sense of belonging and ownership. Through placemaking, migrants can contribute their unique perspectives and experiences to create spaces that accommodate diverse cultural practices and social interactions. This not only enhances their integration process but also enriches the overall fabric of the community. By promoting agency and involvement in placemaking initiatives, cities can create welcoming environments that embrace diversity and foster intercultural dialogue.

## Benefits of interacting with nature for mental health and its relation to the inclusion process

Interacting with nature offers vital mental health benefits crucial for the inclusion process of migrants and minorities facing various challenges. Amidst language barriers, discrimination, and financial strain, nature serves as a sanctuary, alleviating stress, loneliness, and cultural adjustment difficulties. Accessible green spaces provide solace, fostering a sense of belonging and well-being while being affordable. Nature-based initiatives promote social cohesion, facilitating integration and positive community interactions. Immersed in natural environments, individuals find respite from urban pressures, enhancing their resilience and mental health. Integrating nature into inclusion strategies acknowledges its therapeutic value, promoting holistic well-being and facilitating the successful integration of migrants and minorities into their new communities.





### The need to promote sustainable practices, green technologies and NbS

Promoting sustainable practices, green technologies, and Nature-based Solutions through nature-based initiatives addressing climate change is paramount for ensuring a just and safe future. As climate change intensifies, vulnerable communities, including migrants and minorities, face disproportionate risks and environmental injustices. By embracing nature-based solutions, such as urban green spaces and ecosystem restoration projects, cities like Copenhagen can mitigate climate impacts while enhancing social equity and resilience. Incorporating green technologies fosters environmental stewardship, reduces carbon footprints, and fosters sustainable development. Embracing nature-based initiatives not only mitigates climate risks but also promotes community empowerment, environmental justice, and a healthier, more sustainable future for all.

o

c



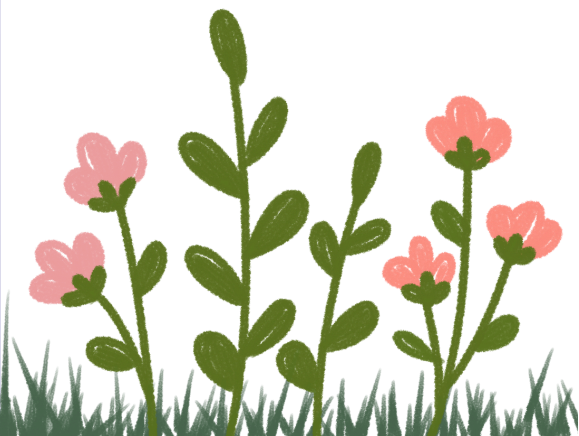
## INTRODUCTION TO CHAPTER 02

*This local Inclusion Plan strategy is dissected into three objectives that aim to address the needs of migrants and members of minorities in Copenhagen while utilizing Urban Nature as an Arena for inclusion and integration.*

## OBJECTIVE 1: CREATING AWARENESS ABOUT NATURE-BASED INITIATIVES IN COPENHAGEN

Copenhagen (CPH) hosts a big variety of Nature-Based Initiatives, including activities, groups, clubs, events, and spaces. These range from an Urban Farm perched on top of an old car auction house (ØsterGRO) to integration gardens, free rental kayaks for trash collection (Green Kayaks) and nature-based solution research groups in Freetown Christiania. Despite their significance, these initiatives often fly under the radar, overshadowed by the city's more prominent green spaces. For newcomers, discovering these initiatives is often a matter of chance, word of mouth, or extensive research, if they're discovered at all. Unfortunately, there is currently no centralized platform compiling these initiatives, hindering accessibility. Hence, the objective of the Local Inclusion Plan (LIP) is to develop a mobile app featuring an interactive map showcasing various nature-based initiatives, how to engage with them, and upcoming events. This app will be actively promoted, particularly within migrant and minority communities, through immigration-focused institutions, universities, and migrant-centric organizations, ensuring broader awareness and participation.

To reach the objective of creating more awareness about nature-based initiatives in Copenhagen we defined the following steps:





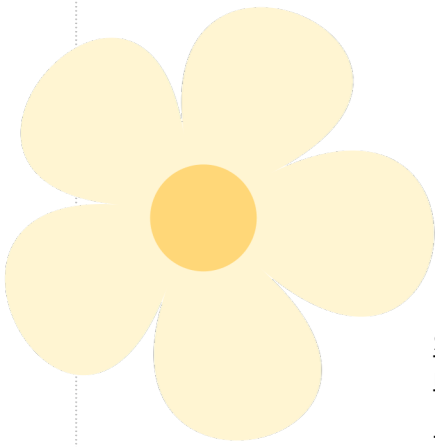
### STEP 1: Cataloguing and categorizing low-barrier and affordable nature-based initiatives in Copenhagen on an interactive map

Nature-based initiatives will be mapped and categorized based on their thematic focus, location, and target audience.

Categories could include:

1. Urban Farms and Community Gardens: Including rooftop gardens, allotment gardens, and community-run farms.
2. Outdoor Fitness and Recreation: Such as running clubs, swimming clubs, outdoor yoga sessions, and fitness trails.
3. Environmental Education and Research: Including citizen science projects, nature conservation groups, and research institutes.
4. Green Spaces and Parks: Identifying parks, nature reserves, and green corridors for leisure and relaxation.
5. Biodiversity and Habitat Restoration: Highlighting initiatives focused on restoring and preserving natural habitats and wildlife as well as permaculture projects.
6. Cultural and Heritage Sites: Showcasing nature-based initiatives that celebrate local culture, traditions, and indigenous knowledge.
7. Outdoor Creativity: Initiatives that engage artistically with the nature of Copenhagen Landscape Painting classes, Landart, Photography classes, Concerts
8. Social Integration and Inclusion: Featuring programs and events aimed at fostering social connections and diversity in nature settings.
9. Age-specific Activities: For example senior walking clubs, nature playgroups for children
10. Engagement with Animals: This category could include bird watching associations, Dog Park groups and many more

By organizing initiatives into these categories, the citizens of Copenhagen can easily navigate and discover opportunities aligned with their interests and preferences, enhancing their engagement with nature-based activities and initiatives.



## STEP 2: Creation of a social digital platform, that educates about green spaces, nature-based initiatives and events in Copenhagen

The development of the app will be undertaken by our project team, which will actively reach out to various nature-based initiatives. These initiatives will have the opportunity to sign up for the app and represent themselves, ensuring comprehensive coverage and representation. Through this collaborative effort, the app will become a centralized platform, offering a wide array of features to both users and participating initiatives.

Users of the app will benefit from an interactive map that showcases the locations of various nature-based initiatives across Copenhagen. Detailed descriptions will be provided for each initiative, outlining how users can participate and engage with them and if the initiative is friendly to non-Danish speakers. Additionally, users will have the ability to directly contact the initiatives for further information or inquiries. Furthermore, the app will include comment sections where users can share their experiences and feedback about participating in different initiatives. For easy navigation, the app will offer filters that allow users to search for specific categories of initiatives based on their preferences and interests.

To keep users informed and engaged, the app will feature a calendar that highlights upcoming events organized by the listed initiatives. Additionally, an AI assistant will be integrated into the app, allowing users to input their interests and preferences. The AI will then suggest relevant nature-based initiatives for them to explore. Moreover, users will have access to a personalized feed that provides updates and notifications from the initiatives they choose to follow. This feature will help users stay connected and informed about the latest developments and activities within the nature-based community.

By incorporating these features, the app aims to create a dynamic and user-friendly platform that promotes accessibility, engagement, and participation in nature-based initiatives throughout Copenhagen.



### STEP 3: Distributing platform & interactive map in local (migrant) communities and during the first steps of the integration process

To ensure broad accessibility and reach within local migrant communities, the platform and interactive map will be distributed through various channels tailored to different stages of the integration process.

Firstly, outreach efforts will target immigrant-focused institutions such as the International House and migrant organizations, where newcomers frequently seek support and information during their initial steps of integration. Additionally, distribution will occur in universities, community centers, and public spaces frequented by migrants and minorities. Promotion strategies will include multilingual marketing materials, targeted social media campaigns, and collaboration with community leaders to raise awareness and encourage adoption among diverse target groups. Word-of-mouth promotion within migrant communities and partnerships with cultural organizations will also play a vital role in expanding the platform's reach. In addition to targeting migrant communities, promoting the app among Danish citizens is crucial to fostering inclusivity and community engagement.

Outreach efforts will extend to local community forums, neighborhood associations, and cultural events where Danes gather, emphasizing the importance of their participation in creating an inclusive platform. Collaborations with mainstream media outlets, including newspapers, radio stations, and online platforms, will broaden awareness among the general population. Furthermore, partnerships with schools, universities, and youth organizations will engage younger demographics and encourage their involvement in nature-based initiatives. Social media influencers and online forums dedicated to environmentalism and community activism can amplify the app's message and attract a diverse audience. By engaging both migrant and Danish communities, the platform can truly reflect the diversity and inclusivity of Copenhagen's urban landscape.

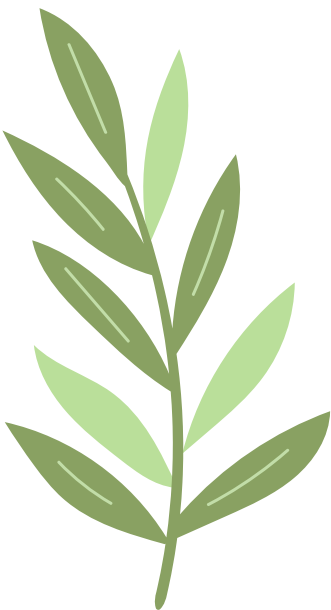
### How does Objective 1 address the needs of Migrants and Members of Minorities in Copenhagen?

The first objective of the local inclusion plan the development of the mobile app is vital for several reasons. Firstly, it serves as a comprehensive resource, consolidating information on diverse nature-based activities scattered throughout Copenhagen. By providing a centralized platform, the app eliminates the need for newcomers to rely solely on chance or extensive research to discover these initiatives, promoting greater inclusivity. Moreover, the app fosters community engagement by facilitating easy access to participation opportunities and events, encouraging residents, particularly migrants and minorities, to actively engage with nature-based initiatives. This increased engagement not only enhances social cohesion but also contributes to individual well-being by fostering a sense of belonging and connection to the local community.

Furthermore, the app serves as a tool for empowerment, offering residents the means to take ownership of their city's green spaces and actively contribute to their preservation and development. Through the app's interactive features, users can discover how to get involved in various initiatives, ranging from volunteering opportunities to educational programs and advocacy efforts. By empowering residents to play an active role in shaping their urban environment, the app promotes a sense of agency and civic pride, fostering a more resilient and sustainable community.

Additionally, the app plays a crucial role in promoting environmental awareness and sustainability. By highlighting nature-based initiatives and their positive impact on the environment, the app educates users about the importance of biodiversity conservation, ecosystem restoration, and sustainable urban planning. Through informative content and interactive features, users can learn about the ecological significance of these initiatives and how they contribute to mitigating climate change, enhancing urban biodiversity, and improving overall environmental quality. This knowledge empowers residents to make informed decisions and take meaningful action to support environmentally friendly practices in their daily lives.

Overall, the development of the mobile app represents a significant step towards fostering a more inclusive, engaged, and sustainable community in Copenhagen. By providing residents, particularly newcomers and minorities, with easy access to nature-based initiatives, the app promotes social integration, community engagement, environmental awareness, and individual empowerment. Through collaborative efforts and widespread promotion, the app has the potential to transform Copenhagen into a vibrant, inclusive, and environmentally conscious city where residents of all backgrounds can thrive.



Expanding on the previous points, the development of the mobile app will not only serve as a repository for existing nature-based initiatives but also enable the identification of gaps in the urban landscape where additional initiatives are needed. By cataloging and mapping these initiatives, city planners and community organizers can gain valuable insights into areas lacking in green spaces and nature-based activities. This information can then inform future development projects and urban planning efforts aimed at enhancing the accessibility and availability of nature-based amenities across Copenhagen.

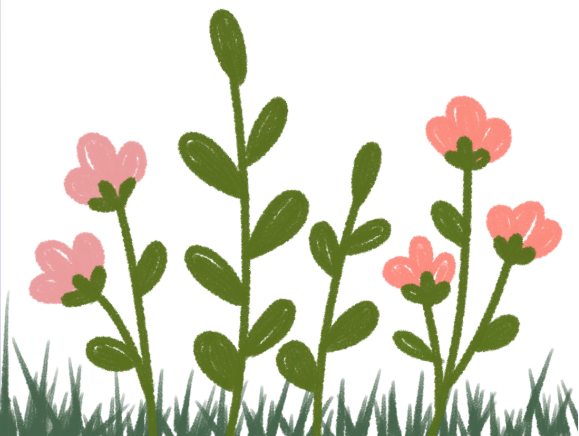
Furthermore, the app will facilitate community engagement and attachment by showcasing the diverse range of nature-based initiatives available in each neighborhood. Users, especially newcomers, will have the opportunity to explore what their local area has to offer, making their neighborhoods more attractive and fostering a sense of belonging. This localized approach reduces the need for residents to travel to the city center to participate in activities, encouraging them to engage with their immediate surroundings and build connections within their communities. As users discover and participate in local initiatives, they develop a sense of attachment to their neighborhoods, contributing to a greater sense of pride and community cohesion. Through these connections, residents become more invested in the well-being and sustainability of their neighborhoods, ultimately fostering a more vibrant and resilient urban environment.



## OBJECTIVE 2: MAKING NATURE-BASED INITIATIVES MORE INCLUSIVE

The main aim of this objective lies in ensuring that all individuals in Copenhagen, irrespective of their backgrounds, feel embraced and involved in the nature-based initiatives that were mapped and promoted in the previous step of the strategy. Our aim is to cultivate environments where people from diverse walks of life can converge, exchange experiences, and benefit from Urban nature as well as contributing to it. Building a Network and initiating conversations with existing nature-based initiatives allows us to grasp their challenges and collaboratively work towards positive transformations. We'll craft a framework guiding these initiatives to become more inclusive and integration-focused. This involves educational seminars, open dialogues, and practical assistance to facilitate effective implementation.

The ultimate vision? A city where everyone feels a sense of belonging, where nature-based activities are accessible and enjoyable for all. We envision a community that is more diverse and dynamic, where individuals from migrant and minority backgrounds actively participate and feel appreciated by locals and the danish culture. By fostering inclusivity within these initiatives, we're not only enriching the social fabric of Copenhagen but also fostering connections, understanding, and progress. It's about forging connections, nurturing bonds, and ultimately enhancing the livability of our city for everyone.







### STEP 1: Going into dialogue with existing nature-based initiatives in Copenhagen to discuss inclusive practices

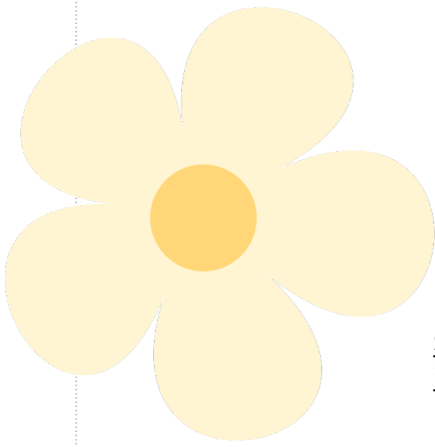
In Step 1, we'll foster dialogue between migrant associations and leaders of diverse nature-based initiatives in Copenhagen. Through collaborative events, we'll identify barriers within existing initiatives, such as unintended exclusiveness and inaccessibility, stigma, and stereotypes. By engaging in open discussions, we aim to define inclusive practices and generate innovative ideas for activities that resonate with diverse communities. This dialogue will serve as a foundation for creating a more inclusive environment within nature-based initiatives, ensuring that everyone feels welcome and valued.

### STEP 2: Co-creation of Framework for inclusive, migrant-friendly and integration-focused practices for nature-based initiatives

In Step 2, we'll collaboratively develop a Framework for inclusive, migrant-friendly, and integration-focused practices within nature-based initiatives. This framework will be co-created with input from migrant associations, initiative leaders, and community members. It will outline guidelines and strategies to promote inclusivity and integration within these initiatives. Possible contents may include guidelines for language accessibility, cultural sensitivity training for staff and volunteers, hosting community events that celebrate diverse cultures, and implementing outreach programs to engage migrant communities. By co-creating this framework, we aim to give existing nature-based initiatives in Copenhagen a useful tool to become more inclusive and welcome diverse people and perspectives to their rows.

### STEP 3: Distributing Frameworks to existing nature-based initiatives

In Step 3, the developed framework will be disseminated to all identified nature-based initiatives, both those already mapped and those yet to be engaged. This distribution will ensure that all initiatives, regardless of their current involvement, have access to the resources and guidelines for fostering inclusivity. Additionally, outreach efforts will target initiatives that have not yet signed up on the App, encouraging their participation in the initiative. By distributing the framework widely, we aim to promote a unified approach to inclusivity across all nature-based initiatives in Copenhagen, fostering a welcoming and diverse environment especially for migrants and members of minorities.



#### STEP 4: Implementation of educational seminars for interested nature-based initiatives that want to become more inclusive

For initiatives that show specific interest in inclusive practices, the workteam will host free educational seminars. These seminars aim to facilitate a deeper understanding of inclusivity and provide practical strategies for overcoming barriers that some initiatives might face. By offering guidance and support, we hope to empower initiatives to adopt more inclusive practices and foster a culture of diversity and participation. Through interactive discussions and collaborative activities, participants will have the opportunity to share experiences, learn from one another, and co-create solutions tailored to their specific contexts. Ultimately, these seminars will serve as a platform for promoting meaningful engagement and fostering a sense of belonging within nature-based initiatives in Copenhagen.

#### How does Objective 2 address the needs of Migrants and Members of Minorities in Copenhagen ?

Objective 2 directly addresses the needs of migrants and members of minorities in Copenhagen by focusing on making nature-based initiatives more inclusive. As discussed earlier, newcomers often face challenges in accessing and participating in local activities due to language barriers, unfamiliarity with Danish systems, and financial stressors. Additionally, members of minorities may encounter discrimination and feel marginalized in certain spaces, including nature-based initiatives. By engaging in dialogue with existing initiatives and co-creating inclusive frameworks, Objective 2 aims to remove these barriers and create welcoming environments for migrants and minorities. For example, by identifying and addressing unintentional exclusivity within initiatives, such as language barriers or cultural insensitivity, we can ensure that all individuals feel valued and included. Moreover, by providing educational seminars and distributing inclusive practices frameworks, we empower initiatives to proactively address these issues, hopefully inspiring them to see diversity as a newfound power.

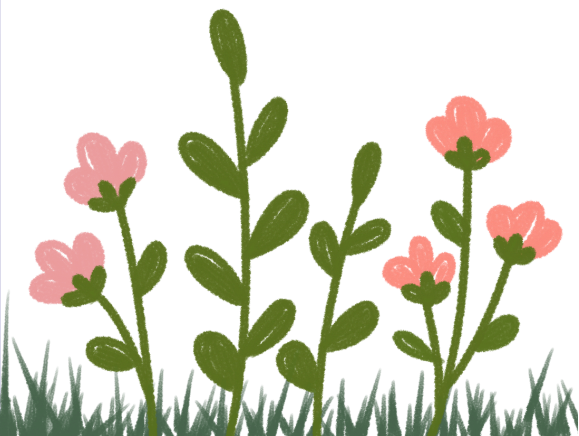
## OBJECTIVE 3: DEVELOPMENT OF NEW NATURE-BASED INITIATIVES FOR INTEGRATION AND INCLUSION IN COPENHAGEN

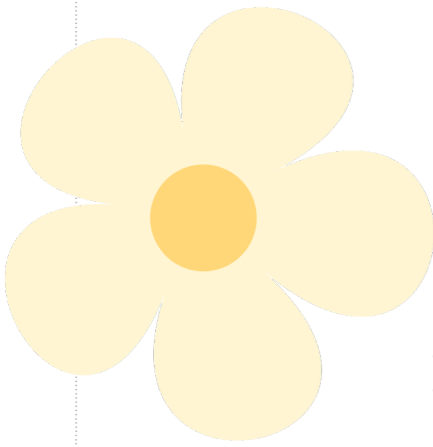
In Objective 3 of the local inclusion plan we aim to develop new nature-based initiatives in Copenhagen to promote integration and inclusion. This involves fostering networking between municipalities, governmental institutions, private entities, migrant communities, and existing nature-based initiatives. The goal is to facilitate collaboration, exchange of resources, and expertise to support the development of projects tailored to address the specific needs of migrant communities while leveraging the benefits of nature-based activities and environmental action. These intersectional integration projects will be designed to enhance social cohesion, promote cultural exchange, and provide opportunities for meaningful engagement with nature. With this objective, we hope to build bridges and leverage the unused potential of the City of Copenhagen for Nature-based initiatives and social inclusion.

Furthermore, the objective focuses on fundraising and establishing innovative collaborations to secure resources and support for the implementation of these initiatives. By engaging with stakeholders, including governmental institutions and private entities, we aim to access funding opportunities and build partnerships to ensure the sustainability of these projects.

Once developed, these initiatives will be integrated into the interactive app established in Objective 1, which will lead to them becoming more visible and accessible to residents and newcomers alike. This integration will allow individuals to easily discover and participate in these initiatives, fostering a sense of belonging and connection to their communities.

Ultimately, the implementation and sustainability of these new initiatives will be vital as well as sustaining the actions of objectives one and two. Ongoing support, monitoring, and adaptation will be crucial to ensuring their success and impact on integration and inclusion in Copenhagen.





STEP 1: Networking between municipalities, governmental institutions, private entities, migrant communities, and nature-based initiatives

In Step 1, we'll initiate networking efforts among municipalities, governmental institutions, private entities, migrant communities, and existing nature-based initiatives. Through collaborative meetings and forums, we aim to identify potential synergies and partnerships. Additionally, we'll define gaps in inclusion efforts and opportunities for migrants and minorities, ensuring that their needs are adequately addressed. This includes assessing unused city spaces that could be repurposed for nature-based initiatives, such as community gardens or urban green spaces, while also exploring ways to fill these identified gaps. Our goal is to ensure a comprehensive and inclusive approach to integration and inclusion in Copenhagen, fostering collaboration and leveraging resources effectively.

STEP 2: Development of multiple intersectional integration projects between mentioned stakeholders

In Step 2, the project will embark on the development of multiple intersectional integration projects, fostering creativity and forming unique collaborations among municipalities, governmental institutions, private entities, migrant communities, and nature-based initiatives. These projects will be specifically tailored to address the needs of migrants in a nature-centric manner, ensuring their active participation and engagement. By integrating their perspectives and experiences, we aim to create initiatives that resonate with diverse communities and promote inclusivity. These projects may include community gardens, multicultural outdoor events, or nature-based workshops designed to foster social connections and cultural exchange. Our focus will be on fostering meaningful interactions in natural settings, promoting well-being, and facilitating the integration process for migrants in Copenhagen. To give an idea about the endless possibilities, here is a list of possible projects that could be implemented.

Combination of Danish classes and gardening/biodiversity workshops funded by the municipality	Opening up Colony Garden association for cultural events/concerts of migrant artists	Migrant led workshops about different world cultures in the CPH botanical garden	Free swimming lessons for migrant children in the public canal swimming pools
Green roof of an office building as new urban gardening space for migrant NGOs and office workers	Workshops in Freetown Christiania for migrants to learn about nature based solutions and Danish sub culture	Turning unused land in Sydhavn neighbourhood into an volunteer based outdoor gym with free classes + befriendly garden	Funded language excursion for migrants and migrant children to beautiful Danish nature spots
CPH Urban farms host culture picnics	Gardensharing between Danes and migrants for migrants that don't have their own garden	Series of meditation workshops for migrants in Colony Garden Associations	Culturebuddy system: A migrant and a Dane go on a walk once a week and tell each other about their cultures/help each other



### STEP 3: Fundraising

In Step 3, we will focus on fundraising efforts to support the implementation of new nature-based initiatives for integration and inclusion in Copenhagen. This step involves seeking financial resources from various sources, including government grants, private donations, and corporate sponsorships. By securing funding, we can ensure the sustainability and success of these initiatives, covering costs related to infrastructure, materials, staffing, and ongoing maintenance. Additionally, we will establish collaborations with potential partners to leverage resources and maximize impact. Through effective fundraising strategies, we aim to create a robust financial foundation that enables the development and implementation of innovative projects that benefit both migrants and the broader community.

### STEP 4: Integrating new initiatives into the interactive map/ mobile app (obj. 1)

Step 4 focuses on the integrating the newly developed nature-based initiatives into the interactive map of the app established in Objective 1 of the project. This involves updating the map with information about the location, details, and activities of each new initiative. By doing so, we ensure that these initiatives are easily accessible and visible to residents, including migrants and members of minorities. Integrating them into the interactive map enhances their visibility and promotes their inclusion in the local community. Additionally, it provides a centralized platform for individuals to discover and engage with these initiatives, fostering participation and collaboration in nature-centric integration efforts across Copenhagen.

### STEP 5: Implementing and sustaining all efforts of the local inclusion plan

Step 5 involves the implementation and long-term sustainability of all efforts outlined in the local inclusion plan. This step requires ongoing commitment and coordination among stakeholders to ensure that initiatives are effectively executed and maintained over time. It involves continuous monitoring, evaluation, and adaptation to address evolving needs and challenges. The implementation entails putting into action the strategies, programs, and projects developed in the previous steps. It requires allocating resources, mobilizing support, and overseeing the execution of activities. Sustainability, on the other hand, involves establishing mechanisms to ensure that these efforts endure beyond their initial implementation phase. This may include securing funding, building partnerships, and fostering community ownership.



We hope that through the social network created with the app in objective 1, the framework and educational materials in objective 2 and the collaborations and newfound partnerships in Objective 3 we can create a community of engaged people interested in nature-based initiatives and nature-based inclusion.

It is crucial to implement and sustain all efforts of the local inclusion plan to achieve meaningful and lasting impact. By doing so, we can effectively address the needs of migrants and members of minorities, promote social cohesion, and create more inclusive communities. Continuous support and investment in these initiatives demonstrate a commitment to diversity, equity, and integration, contributing to the overall well-being and prosperity of Copenhagen as a whole.

#### How does Objective 3 address the needs of Migrants and Members of Minorities in Copenhagen?

This part of the Local Inclusion Plan aims to address the needs of migrants and minorities in Copenhagen by developing new nature-based initiatives that cater to their specific requirements. Through collaboration between stakeholders and the creation of intersectional integration projects, we can foster creativity and address gaps in the density and impact of nature-based initiatives as well as integration efforts.

These efforts will enhance accessibility to nature-centric activities, promote inclusion, and improve mental and physical well-being, overall making integration easier by for example making it possible to acquire Danish language skills in a fun and interesting natural setting. By utilizing unused spaces in the city and promoting sustainable practices, we can create vibrant green areas and nature-based solutions that benefit the entire community.

Objective 3 also plays a crucial role in place-making and agency for migrants and minorities in Copenhagen. By involving them in the development of new nature-based initiatives, we empower these communities to shape their surroundings and have a say in the activities available to them. This participatory approach fosters a sense of ownership and belonging, as individuals become actively engaged in creating spaces that reflect their needs and preferences. Additionally, by repurposing unused city spaces into green areas and nature-centric projects, we enhance the livability and attractiveness of neighborhoods, providing residents with safe and inviting places to gather and connect. Through these efforts, Objective 3 promotes agency and empowers migrant and minority communities to actively contribute to the cultural and environmental landscape of Copenhagen.



## INTRODUCTION TO CHAPTER 3

*The implementation of the Local Inclusion Plan involves several key steps and considerations. They will be discussed in the following chapter.*



### 1. Project Timeline

A concise timeline will be established to outline the various phases and milestones of the project, ensuring efficient progress and accountability. For a project of this scale with an ambitious goal set like ours a minimum duration of 4 years for the first three objectives is expectable, even though a project like ours aims to be timeless and sustainable.

### 2. Core Work Team Establishment

A dedicated team comprising individuals with diverse expertise and backgrounds will be assembled to lead and coordinate the implementation process, ensuring comprehensive coverage of all aspects of the plan. Ideally, the work team will be a collection of expertise in the following fields: Communication and Marketing, Leadership, Project Management, App development and programming, Inclusion and Diversity, Migration Studies, Psychology and non-formal Education.

### 3. Cost and Risk Assessments

Thorough assessments of costs and risks associated with the implementation will be conducted to anticipate potential challenges and allocate resources effectively, ensuring the smooth execution of the plan. Some of the risks of this project could be: Possible risks associated with the local inclusion plan are the following:

Insufficient funding or budgetary limitations could hinder the execution of planned activities and initiatives, leading to delays or compromises in the quality of implementation. Furthermore, inadequate involvement or buy-in from key stakeholders, including private business, migrant communities, minority groups, and local authorities, may result in resistance, lack of support, or misalignment of priorities, undermining the effectiveness of the plan. Since this is a project about inclusion, cultural differences and language barriers between different stakeholders may impede the risk for ineffective communication, collaboration, and understanding, hindering the successful implementation of inclusive initiatives. This project aims to have a transformational effect on communities, spaces and existing initiative. Resistance to change from existing institutions, organizations, or community members may pose challenges to the adoption of new inclusive practices, or interventions aimed at promoting inclusion, integration and diversity.

Another factor that could play a role is shifting political dynamics in Denmark, changes in government policies, or regulations may disrupt the continuity and sustainability of the inclusion plan, affecting its long-term impact. Socioeconomic problems like social tensions, or conflicts within communities may foster exclusion, or marginalization, complicating efforts to foster cohesion and solidarity among diverse populations. Lastly, external factors such as natural disasters, economic downturns, or public health crises could adversely affect the implementation of the plan by diverting resources, attention, and priorities away from inclusion-related initiatives.

Addressing these risks requires proactive risk management strategies from the Local Inclusion Plan workteam, stakeholder engagement, robust monitoring and evaluation mechanisms, and flexibility in adapting to changing circumstances and contexts.

#### 4.Potential Collaborations

Another important step of the implementation of the Local Inclusion Plan is the identification of potential collaborators, including municipalities, governmental institutions, private entities, and community organizations, will be crucial to leverage resources, expertise, and networks for successful implementation.

#### 5.Actor-Network Engagement

Engaging with various stakeholders and actors involved in the inclusion plan, including migrants, minority communities, local authorities, and civil society groups, is crucial for the success of the plan, therefore the communication coming from the work team must be of high quality, efficient, reliable and inclusive. Through creative media outreach, impactful face-to-face meetings and events we will ensure one of the most important aspects of the project: Actor-Network Engagement.

#### 6.Collection of Resources and Fundraising

Efforts will be made to collect necessary resources through fundraising initiatives, grants, governmental support, private funds and partnerships with philanthropic organizations to support the implementation of the plan and sustain its activities in the long run.

#### 7.Quality Assurance

Continuous monitoring and evaluation mechanisms will be established to ensure the quality and effectiveness of the implemented initiatives, allowing for adjustments and improvements as needed to achieve the desired outcomes and impact.

#### 8.Possibilities for Empirical Research

The research titled "Nature-based integration of immigrants in Europe: A review" by Gentin et al. (2019) explores the relationship between nature and the integration of immigrants in Europe. It highlights that while nature is perceived as a means of integration and a resource for newcomers, very few studies have addressed this connection. The study identifies four dimensions of integration—structural, cultural, interactive, and identificational—and emphasizes the importance of nature in facilitating social interactions, learning cultural customs, and promoting the well-being of immigrants. It concludes that further research should focus on developing and analyzing nature-based solutions for integration purposes, emphasizing the need for equal access to nature for all immigrants. Therefore, we propose to accompany this project with empirical research making our local inclusion plan a case study that then will be scientifically measured and evaluated so that it will be replicable in other counties or cities. These research efforts will help filling the gap in knowledge about nature based integration.



## 9.Implementation of Objective 1

This involves creating awareness about Copenhagen's nature-based initiatives. This includes disseminating information through various channels such as social media campaigns, community events, and informational materials distributed in migrant and minority communities. Collaborating with local organizations, educational institutions, and governmental agencies will help reach a wider audience. Additionally, organizing guided tours or workshops showcasing existing initiatives can enhance public awareness and participation. Regular updates on an interactive map or mobile app can provide real-time information about nature-based activities and events, ensuring continuous engagement with the community.

## 10. Implementation of Objective 2

Making nature-based initiatives more inclusive entails conducting dialogues with stakeholders to identify barriers and develop inclusive practices. Educational seminars and workshops can provide training on diversity awareness and cultural sensitivity. Co-creating frameworks for inclusive practices with input from migrant communities ensures their needs and perspectives are considered. Distributing these frameworks to existing initiatives facilitates their adoption and implementation, fostering a more inclusive environment. Continued support and monitoring help ensure that initiatives remain inclusive and responsive to evolving community needs.

## 11. Implementation of Objective 3

This phase of the implementation involves developing new nature-based initiatives for integration and inclusion. This includes networking with stakeholders to identify collaboration opportunities and unused spaces for new projects. Creative intersectional integration projects can address specific needs of migrant communities while promoting social cohesion and environmental sustainability. Fundraising efforts and collaborations with private entities and governmental institutions will secure the resources for project implementation. Integrating new initiatives into existing platforms ensures visibility and accessibility. Sustainability plans and community engagement strategies support the long-term success and impact of these initiatives.

## 12.Dissemination

Promotion and dissemination efforts involve leveraging multiple channels to raise awareness about the project and its outcomes. This includes traditional media, social media platforms, community events, and partnerships with local influencers. Targeted outreach to migrant and minority communities ensures inclusivity and broad participation.

## 13.Evaluation

Evaluation of the project's effectiveness involves collecting feedback from stakeholders, monitoring key performance indicators, and assessing the impact on integration and inclusion outcomes. Regular reviews and adjustments to strategies and activities based on evaluation findings ensure continuous improvement and relevance.



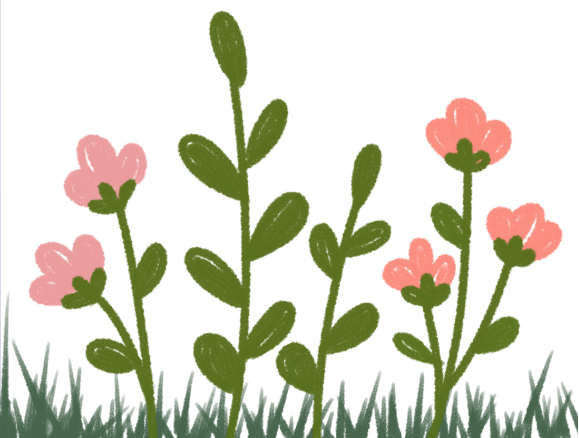
## CONCLUSION

In conclusion, the Local Inclusion Plan represents a holistic approach to fostering integration, inclusivity, and sustainability in Copenhagen. By addressing the diverse needs of migrants, minorities, and the wider community, the plan unlocks the potential for positive change in the city's environment. Through meaningful engagement with nature-based initiatives, the plan creates thriving neighborhoods, communities, and natural habitats.

This project has the power to illuminate initiatives and knowledge previously inaccessible, bringing awareness to nature-based solutions, environmental challenges, and sustainable practices. By promoting intercultural experiences and fostering inclusivity, the plan cultivates a sense of belonging and connection among diverse populations.

It opens doors to new project opportunities, encouraging collaboration and innovation across sectors. By leveraging the strengths of various stakeholders and harnessing the inherent power of nature, the plan paves the way for a more vibrant, resilient, and equitable city.

Ultimately, the implementation of this plan has the potential to transform Copenhagen into a model city where nature thrives, knowledge is shared, communities flourish, and all residents have the opportunity to participate and thrive. Through collective action and shared vision, we can build a city that embraces diversity, fosters sustainability, and creates a brighter future for generations to come.







Published 2023 by Crossing Borders  
(version 1.0)

The Programme was edited and published in the Frame of the Erasmus+ Strategic Partnership  
*Incluate - Educating for Inclusion* - 2021-1-DE02-KA220-ADU000035355.

FREE OF CHARGE PUBLICATION

#### Disclaimer

Funded by the European Union. Views and opinions expressed are however those of the author(s) only and do not necessarily reflect those of the European Union or the European Education and Culture Executive Agency (EACEA). Neither the European Union nor EACEA can be held responsible for them.

This publication is available under the Creative Commons licencing  
Attribution-ShareAlike 4.0 International (CC BY-SA 4.0)  
(licence link: <https://creativecommons.org/licenses/by-sa/4.0/deed.pl>)

